



Kimono Baby Shoes

By
Aimee Larsen
for HomeSpun-Threads

This Kimono pattern comes in three sizes.

Size 1	0-3 Months	4" sole
Size 2	3-6 Months	4.5" sole
Size 3	6-12 Months	5" sole



Materials:

Outer Fabric ¼ yard
Inner Fabric ¼ yard
Heavy Fusible Interfacing
Threads & Embellishments

Cutting: You can cut all pieces individually or cut only the parts shown below. I like to cut my Inside Top and Outside Sole with the pattern and then use larger pieces. I'll show you how below. It's less cutting and easier to sew so that you are sure to catch

all the edges. You will need to cut the pieces according to the pattern that you use.

Ironing: Please prep all your materials before starting. Using an iron, adhere the sticky side of the interfacing to the wrong side of your fabric pieces. You can do this before cutting if you prefer, it makes it easier to work with. You do not have to apply interfacing to the interior fabrics unless you prefer but will give your outer fabrics a smooth finish.



Now Let's Get Started:

1. Lay top fabric face down on inner fabric, wrong sides together. Sew on the line indicated and clip out corners, trim excess fabric the same size and shape, press out. Sew around all rough edges to tack down.



2. Sew top to outside shoe bottom. Place center of top with center of the back of the heel, right sides & rough edges together. Stitch the edges together around the edge of the shoe sole. You'll sew and ease all the way around the shoe bottom as shown above.

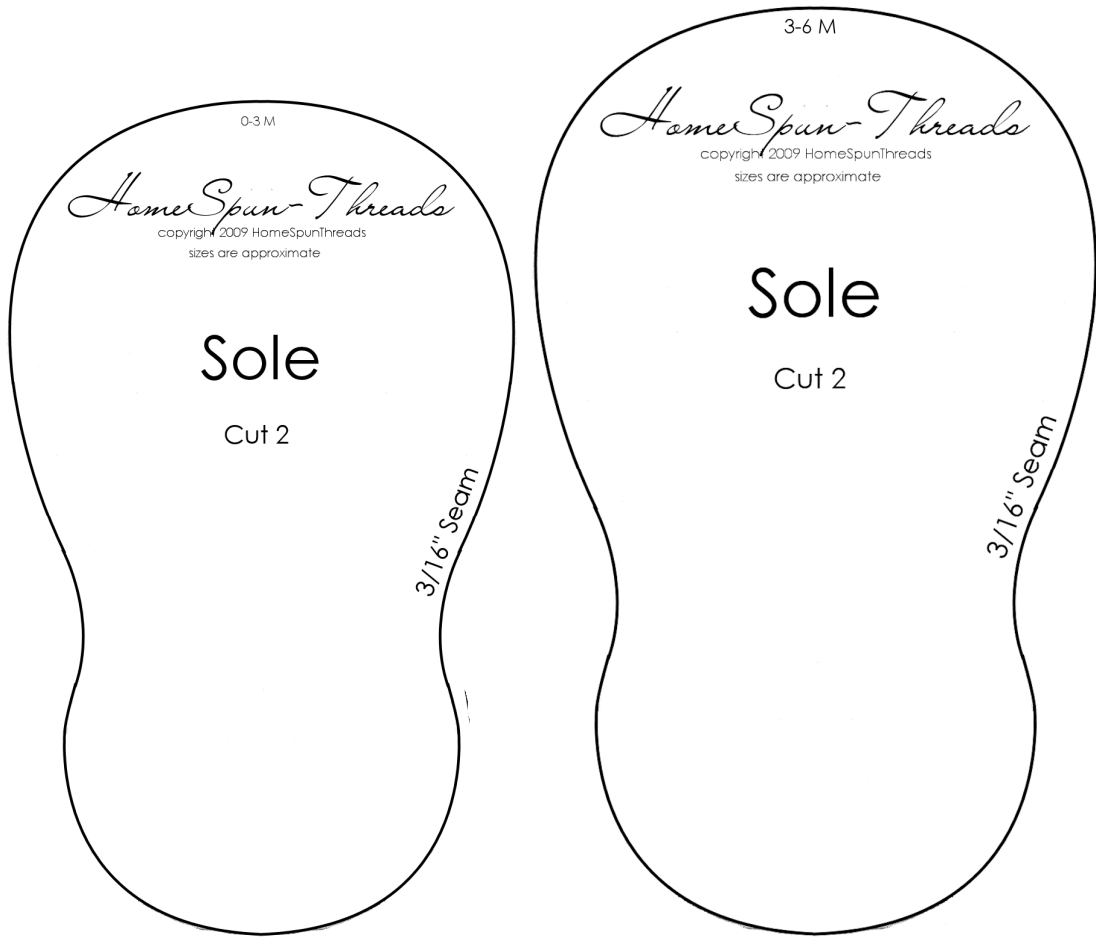


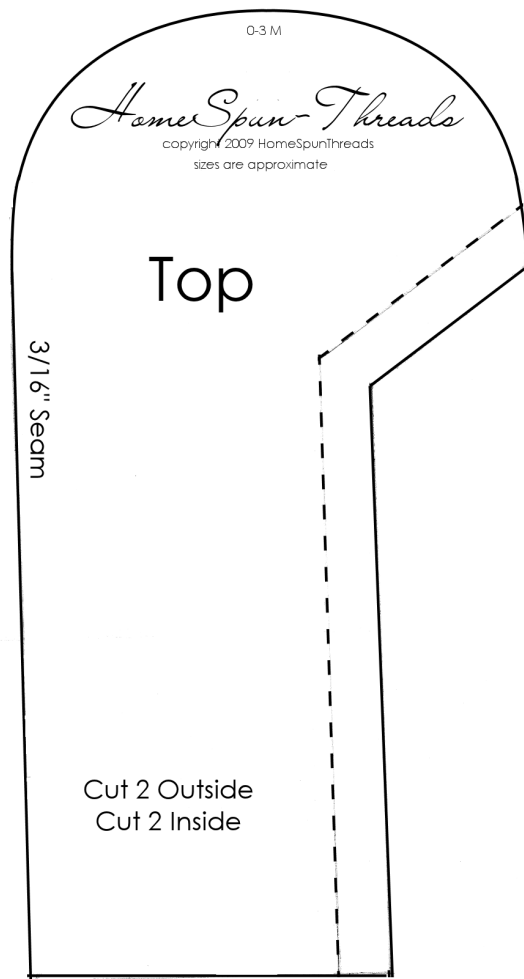
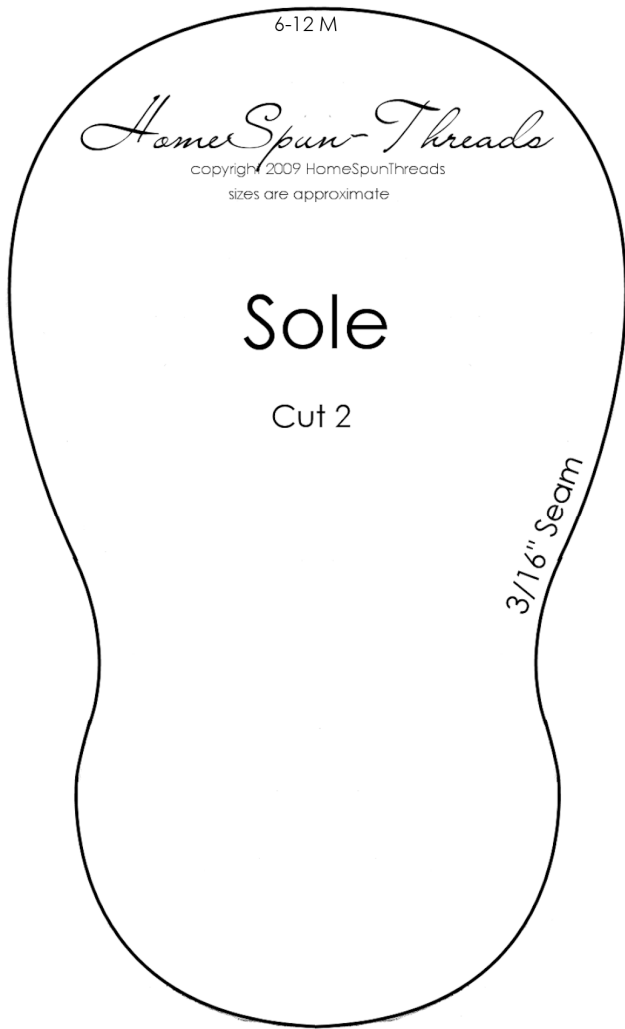
3. Turn shoe out and check for seams that you may not have caught. Then fold the shoe flat and pin down to inside sole fabric. Outside soles, wrong side will be facing up. You will sew from the right blue dot (shown above) all the way around the heel to the blue dot on the left. Trim away excess fabric

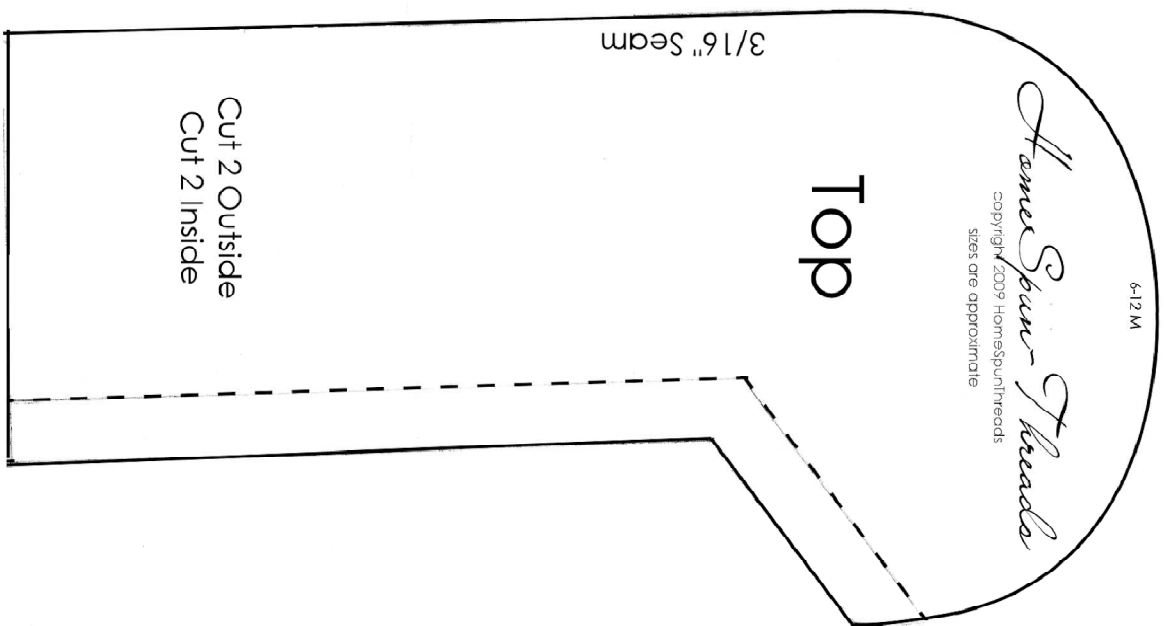
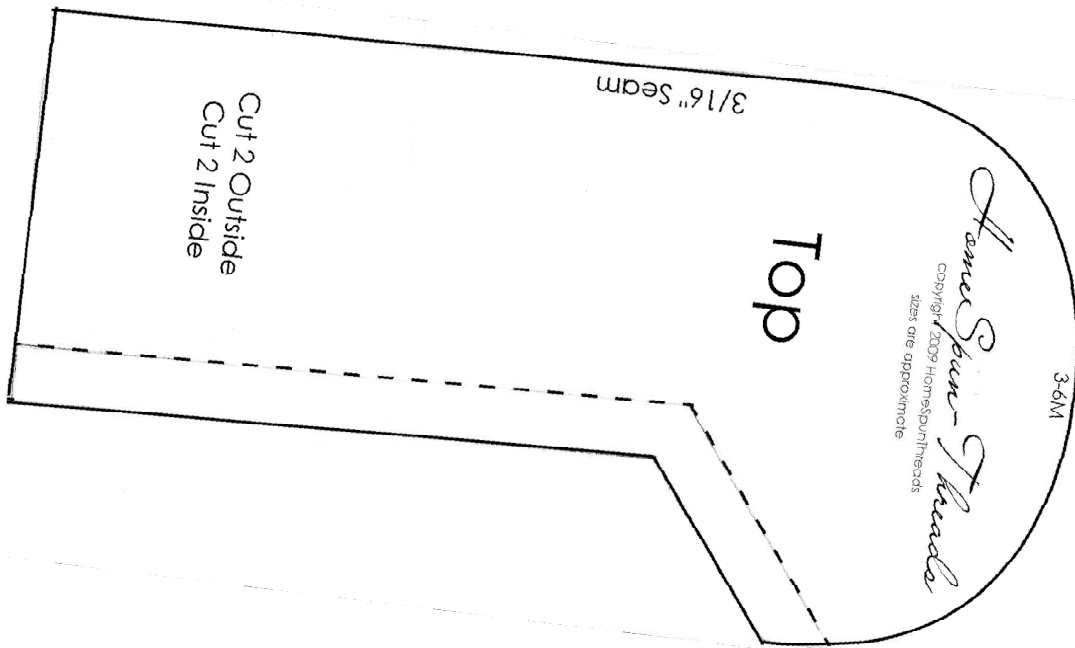


4. Your shoe will then be ready to turn out. Pull the shoe from the inside out through the opening left in the toe. Once doing this, you will check your seams again to make sure you have caught all your edges before closing up the hole in the shoe foot. Once you are sure you are ready to finish. Stitch the opening closed along the existing stitches. Trim edge, turn right side out and push out edges from the inside with your scissors for a smooth round toe. Additional images at the

end of this pattern may be used as a reference if needed.







Additional Images from previously published pattern by HomeSpun-Threads

Finished product images courtesy of [Seamingly Possible](#)





Sample Embellishment Ideas provided by [Seamingly Possible](#)





A limited Commercial License is included with the purchase of this pattern. Limited Commercial means that all products are made in a home based business by the owner only. These items may not at anytime be mass produced on a product line. This pattern is also protected under international copyright laws and intellectual property laws.

If you have any questions about this pattern, please feel free to contact HomeSpun-Threads at Alarsen@homespun-threads.com



Please check out other patterns that are available!