



Diaper Bag Pattern

By Aimee Larsen for HomeSpun-Threads

Materials for Diaper Bag:

- $\frac{3}{4}$ Yard for Top & Straps
- $\frac{1}{2}$ Yard for Bottom
- 1 Yard for Inside and Pocket
- 2 x 19" length of ribbon
- 2 Yards of Heavy Fusible Interfacing

Cut and Iron:

- Cut 2: Top, 19" Wide x 12" Tall; Straps, 4"

Wide x 28" Long

- Cut 2: Bottom, 19" Wide x 7" Tall; make a 3" x 3" notch on each bottom corner
- Cut 2: Inside, 19" Wide x 19" Tall; make a 3" x 3" notch on each bottom corner
 - Cut 4: Interfacing, 19" Wide x 19" Tall; make a 3" x 3" notch on each bottom corner.
 - Cut 2: Interfacing, 2" Wide x 28" Tall
- Iron interfacing for bag to the wrong side of all pieces. To iron the outside of your bag. Lay the bottom and top of your bag pieces together. Iron interfacing to the back side of your outside pieces.
- Iron 2" wide interfacing down the center of your 4" wide straps. Fold edges over interfacing and fold in half, aligning the clean edges.
- Lay pocket face down fold the top down $\frac{1}{2}$ " inch and press; fold again $\frac{1}{2}$ " and press. Fold the bottom of pocket up $\frac{1}{4}$ " and press.





1. Sew down both sides of your strap and along the top of your pocket on the fold and along the edge.



2. Lay Pocket at the bottom of your inside bag piece, 1/2" from the top of notches. Stitch down across the bottom of the pocket. Sew from the bottom of the pocket to the top of the pocket. Start 5.5" from both sides of the bag. This will create 3 pockets.

3. Lay inside pieces right sides together. Sew along 3/8" bottom and press out, along the sides and press out. Pull notches of bag closed and sew 3/8" from edge. Your interior bag is complete.





4. Fold the bottom of bag where the bottom and top are aligned with right sides together. Sew the top and bottom together with a 3/8" seam. Open and press out. Sew ribbon centered down seam. Finish making bag with the same steps as inner bag. Turn bag right side out.

5. Fold the top of the bag down 1" all the way around. Pin straps approximately 3 inches from the center of bag and tack down.

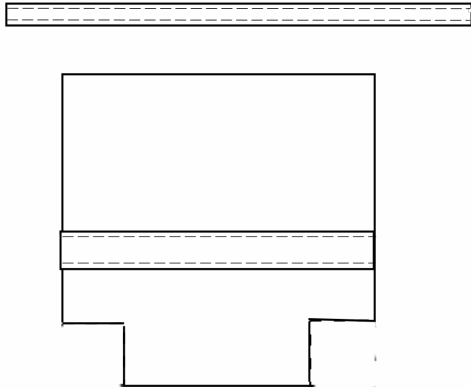


6. Insert interior bag down into exterior bag. Push corners into the bottom for a tight fit. Line up side seams and fold down the top of the interior bag and pin all the way around as shown. If you want to add a magnetic snap, please follow the instructions that accompany your snap to apply it to your bag.

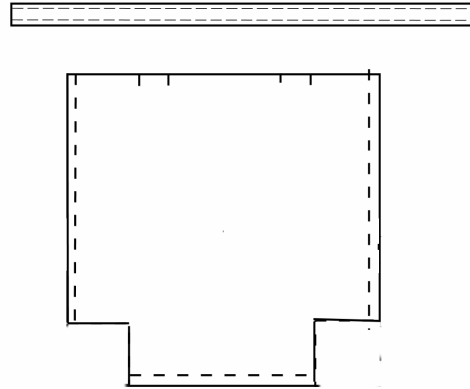
7. Sew around the top of your bag 3/16" from the edge to finish.

On the next page are some diagrams that may be useful.

Sew Trim On, Sew Straps

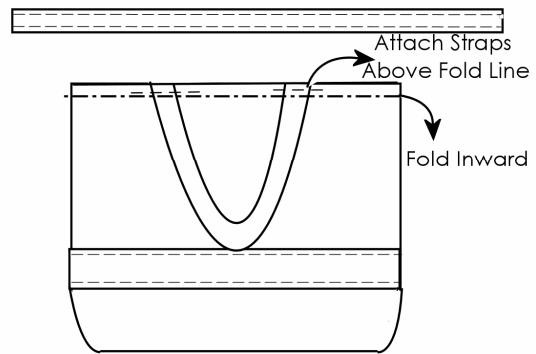
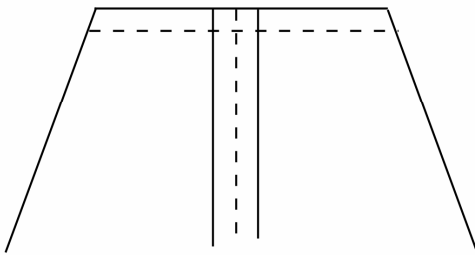


Sewing Sides Together & Attaching Straps



Turn Out Bag, Attach Straps, Iron Top Edge

Sew Corners Square



Your bag is done!